

SUBMITTAL DATA: PCA-A30GA & PUY-A30NHA

30,000 Btu/h CEILING-SUSPENDED AIR-CONDITIONING SYSTEM

Job Name: _____	Location: _____	Date: _____
Purchaser: _____	Engineer: _____	
Submitted to: _____	For <input type="checkbox"/> Reference <input type="checkbox"/> Approval <input type="checkbox"/> Construction	
Unit Designation: _____	Schedule No.: _____	

GENERAL FEATURES

- Limited warranty: one year on parts and defects and six years on compressor
- Compact side-discharge outdoor unit
- Zone control
- Hard-wired wall-mounted controller (PAR-21MAA)
- Automatic fan speed control
- Quiet operation – both, indoor and outdoor units
- Auto restart following a power outage
- Self check function
- Advanced microprocessor control

Rated capacity	30,000 Btu/h
Minimum capacity	12,000 Btu/h
SEER	13.0
Total input	4100 W
Power supply	208 / 230V, 1 Phase, 60 Hz
Breaker size	30 A

Voltage

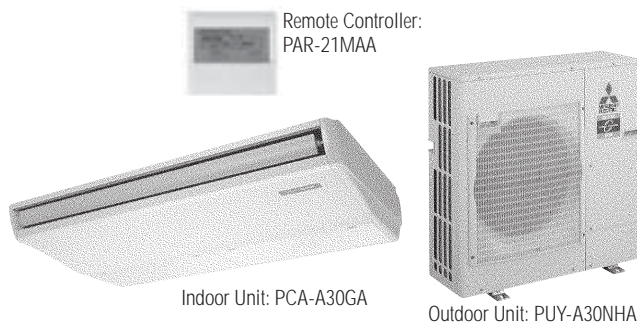
Indoor - outdoor S1-S2	AC 208/230V
Indoor - outdoor S2-S3	DC 24V
Indoor - remote controller	DC

Indoor Unit

MCA	1 A
Fan motor	0.53 F.L.A.
Fan motor output	70 W
Airflow (Lo-M1-M2-Hi)	495-530-565-635 Dry CFM
	445-480-510-570 Wet CFM
Sound (level) (Lo-M1-M2-Hi)	37-39-41-43 dB(A)

DIMENSIONS	INCHES	MM
W	51-9/16	1310
D	26-3/4	680
H	8-9/32	210

Weight (lbs/Kg)	75 / 34
Field drain pipe size I.D. (inches/mm)	1 / 25.4


Outdoor Unit

Compressor	DC inverter/twin rotary
MCA	25
Fan motor	0.75 F.L.A.
Sound level	48 dB(A)

DIMENSIONS	INCHES	MM
W	37-3/8	950
D	13 + 1-3/16	330 + 30
H	37-1/8	943

Weight (lbs/Kg)	163 / 74
Refrigerant type	R410A
Refrigerant pipe size O.D. (inches/mm)	
gas side	5/8 / 15.88
liquid side	3/8 / 9.52
Max. refrigerant pipe length (ft/m)	165 / 50
Max. refrigerant pipe height difference (ft/m)	100 / 30
Connection method	flared

NOTES :

*1. Rating conditions (cooling)-indoor : D.B. 80°F, W.B. 67°F
 outdoor : D.B. 95°F, W.B. 75°F.

Operating range

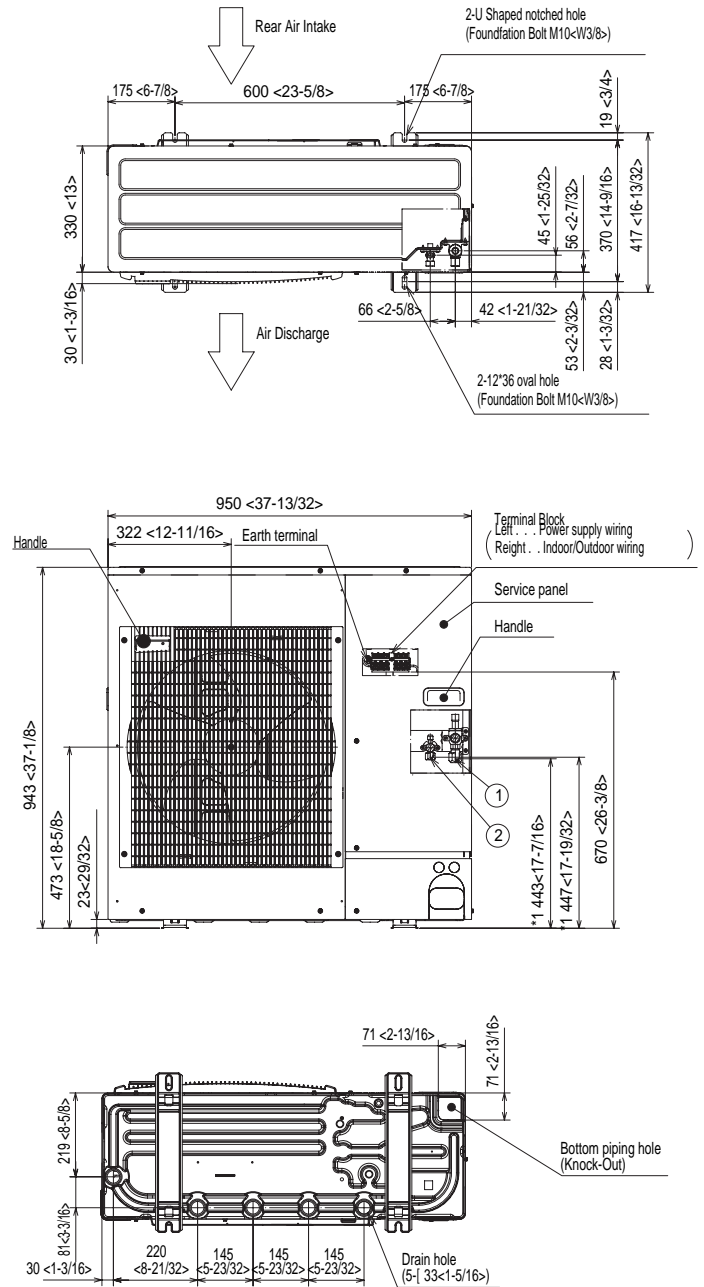
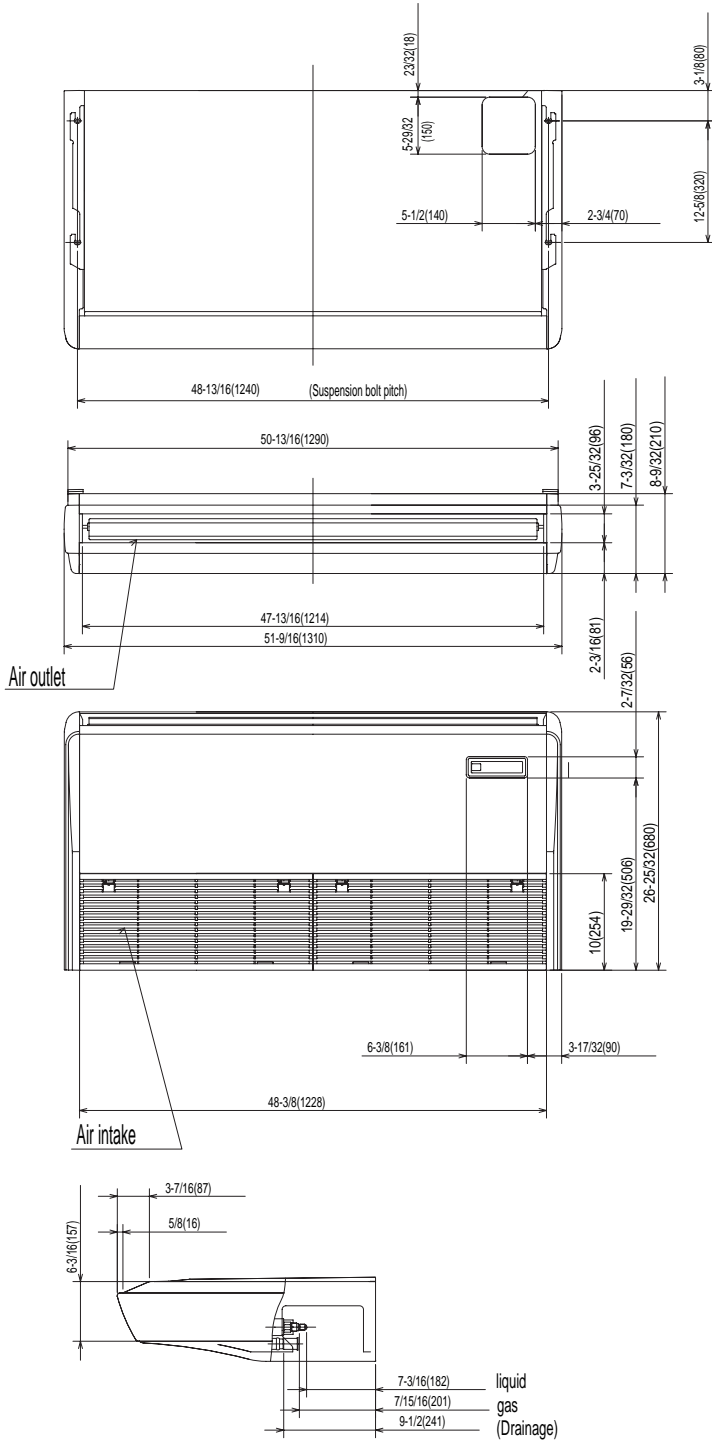
		Indoor intake air temp.	Outdoor intake air temp.
Cooling	Maximum	D.B. 95°F, W.B. 71°F	D.B. 115°F
	Minimum	D.B. 67°F, W.B. 57°F	D.B. 0°F *

* With wind baffle installed. If not installed, the minimum rated temperature is 23°FDB.



Notes:

DIMENSIONS: PCA-A30GA & PUY-A30NHA



HVAC Advanced Products Division
Mitsubishi Electric & Electronics USA, Inc.

3400 Lawrenceville Suwanee Rd
Suwanee, GA 30024
Tele: 678-376-2900 • Fax: 800-889-9904
Toll Free: 800-433-4822 (#3)
www.mehvac.com