

**SUBMITTAL DATA: PCA-A36GA & PUY-A36NHA**

35,000 Btu/h CEILING-SUSPENDED AIR-CONDITIONING SYSTEM

Job Name:	Location:	Date:
Purchaser:	Engineer:	
Submitted to:	For <input type="checkbox"/> Reference <input type="checkbox"/> Approval <input type="checkbox"/> Construction	
Unit Designation:	Schedule No.:	

**GENERAL FEATURES**

- Limited warranty: one year on parts and defects and six years on compressor
- Compact side-discharge outdoor unit
- Zone control
- Hard-wired wall-mounted controller (PAR-21MAA)
- Automatic fan speed control
- Quiet operation – both, indoor and outdoor units
- Auto restart following a power outage
- Self check function
- Advanced microprocessor control

Rated capacity . . . . .	35,000 Btu/h
Minimum capacity . . . . .	12,000 Btu/h
SEER . . . . .	13.1
Total input . . . . .	4630 W
Power supply . . . . .	208 / 230V, 1 Phase, 60 Hz
Breaker size . . . . .	30 A

**Voltage**

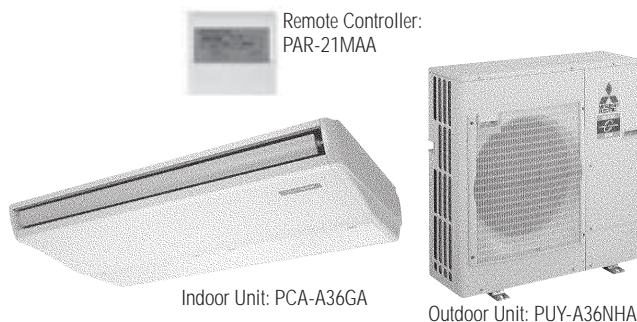
Indoor - outdoor S1-S2 . . . . .	AC 208/230V
Indoor - outdoor S2-S3 . . . . .	DC 24V
Indoor - remote controller . . . . .	DC

**Indoor Unit**

MCA . . . . .	1 A
Fan motor . . . . .	0.69 F.L.A.
Fan motor output . . . . .	90 W
Airflow (Lo-M1-M2-Hi) . . . . .	705-740-810-880 Dry CFM
	635-670-730-790 Wet CFM
Sound (level) (Lo-M1-M2-Hi) . . . . .	37-39-41-43 dB(A)

DIMENSIONS	INCHES	MM
W	51-9/16	1310
D	26-3/4	680
H	10-5/8	270

Weight (lbs/Kg) . . . . .	82 / 37
Field drain pipe size I.D. (inches/mm) . . . . .	1 / 25.4


**Outdoor Unit**

Compressor . . . . .	DC inverter/twin rotary
MCA . . . . .	25
Fan motor . . . . .	0.75 F.L.A.
Sound level . . . . .	48 dB(A)

DIMENSIONS	INCHES	MM
W	37-3/8	950
D	13 + 1-3/16	330 + 30
H	37-1/8	943

Weight (lbs/Kg) . . . . .	163 / 74
Refrigerant type . . . . .	R410A
Refrigerant pipe size O.D. (inches/mm)	
gas side . . . . .	5/8 / 15.88
liquid side . . . . .	3/8 / 9.52
Max. refrigerant pipe length (ft/m) . . . . .	165 / 50
Max. refrigerant pipe height difference (ft/m) . . . . .	100 / 30
Connection method . . . . .	flared

**NOTES :**

\*1. Rating conditions (cooling)-indoor : D.B. 80°F, W.B. 67°F  
 outdoor : D.B. 95°F, W.B. 75°F.

**Operating range**

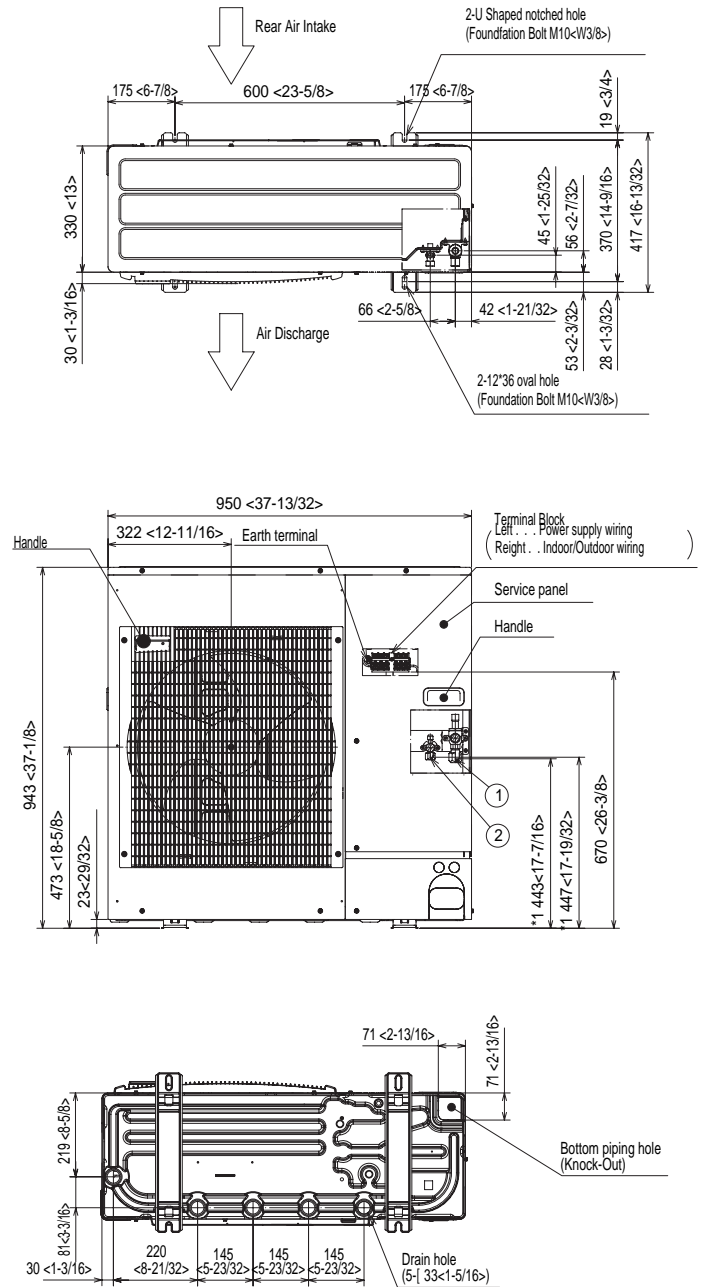
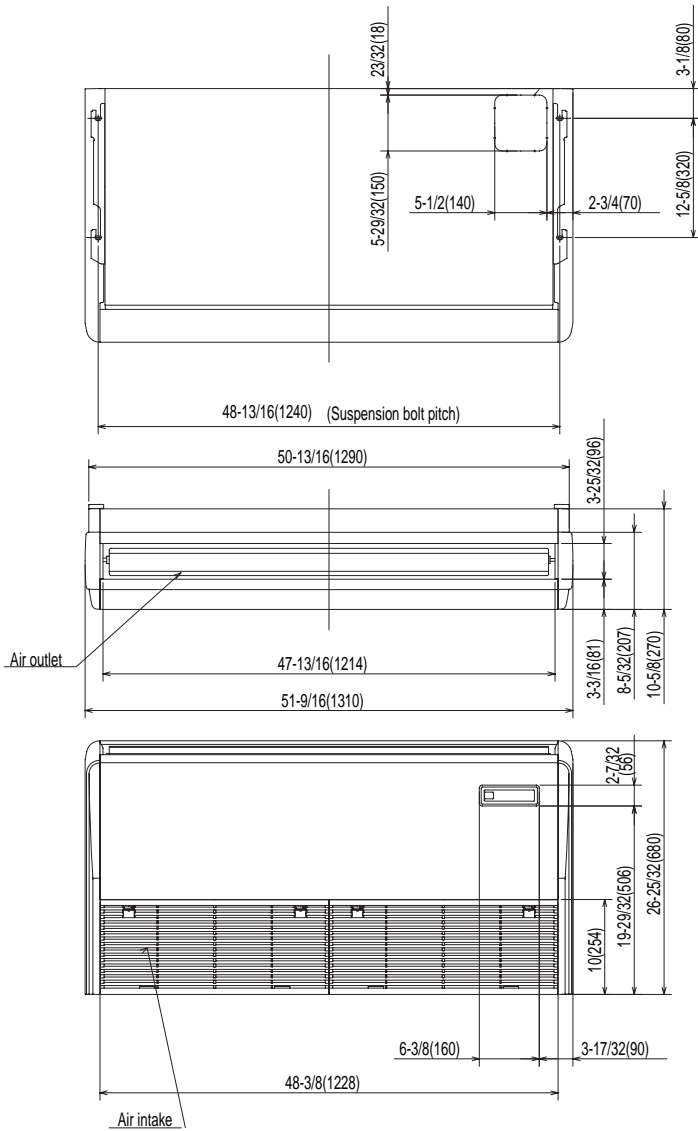
		Indoor intake air temp.	Outdoor intake air temp.
Cooling	Maximum	D.B. 95°F, W.B. 71°F	D.B. 115°F
	Minimum	D.B. 67°F, W.B. 57°F	D.B. 0°F *

\* With wind baffle installed. If not installed, the minimum rated temperature is 23°FDB.



Notes:

# DIMENSIONS: PCA-A36GA & PUY-A36NHA



HVAC Advanced Products Division  
Mitsubishi Electric & Electronics USA, Inc.

3400 Lawrenceville Suwanee Rd  
Suwanee, GA 30024  
Tele: 678-376-2900 • Fax: 800-889-9904  
Toll Free: 800-433-4822 (#3)  
[www.mehvac.com](http://www.mehvac.com)