

**SUBMITTAL DATA: PKA-A30FA & PUZ-A30NHA**
**30,000 Btu/h WALL-MOUNTED HEAT PUMP SYSTEM**

Job Name: _____	Location: _____	Date: _____
Purchaser: _____	Engineer: _____	
Submitted to: _____	For <input type="checkbox"/> Reference <input type="checkbox"/> Approval <input type="checkbox"/> Construction	
Unit Designation: _____	Schedule No.: _____	

**GENERAL FEATURES**

- Limited warranty: one year on parts and defects and six years on compressor
- Compact side-discharge outdoor unit
- Zone control
- Hard-wired, wall-mounted remote controller (PAR-21MAA)
- Automatic fan speed control
- Quiet operation – both, indoor and outdoor units
- Auto restart following a power outage
- Self check function
- Advanced microprocessor control
- Auto changeover for cooling and heat

**Cooling**

Rated capacity . . . . .	30,000 Btu/h
Minimum capacity . . . . .	12,000 Btu/h
Total input . . . . .	4400 W
SEER . . . . .	13.0
Power supply . . . . .	208 / 230V, 1 Phase, 60 Hz
Breaker size . . . . .	30 A

**Heating**

Rated capacity . . . . .	34,000 Btu/h
Minimum capacity . . . . .	12,000 Btu/h
Total input . . . . .	3660 W
HSPF (I/V) (Btu/h/W) . . . . .	8.5 / 6.8

**Voltage**

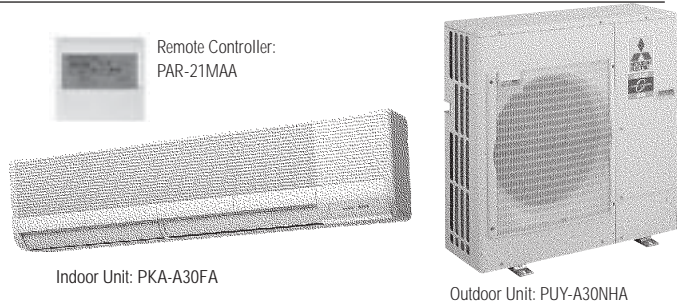
Indoor - outdoor S1-S2 . . . . .	AC 208/230V
Indoor - outdoor S2-S3 . . . . .	DC 24V
Indoor - remote controller . . . . .	DC

**Indoor unit**

MCA . . . . .	1 A
Fan motor . . . . .	0.43 F.L.A.
Fan motor output . . . . .	.45 W
Airflow (Lo-Hi) . . . . .	.530-705 Dry CFM 480-635 Wet CFM
Sound level (Lo-Hi) . . . . .	39-45 dB(A)

DIMENSIONS	INCHES	MM
W	55-1/8	1400
D	9-1/4	235
H	13-3/8	340

Weight (lbs/kg) . . . . .	53 / 24
Field drain pipe size I.D. (inches/mm) . . . . .	3/4 / 19.05


**Outdoor unit**

Compressor . . . . .	DC inverter/twin rotary
MCA . . . . .	25
Fan motor . . . . .	0.75 F.L.A.
Sound level . . . . .	48 dB(A)

DIMENSIONS	INCHES	MM
W	37-3/8	950
D	13 + 1-3/16	330 + 30
H	37-1/8	943

Weight (lbs/Kg) . . . . .	165 / 75
Refrigerant type . . . . .	R410A
Refrigerant pipe size O.D. (inches/mm)	
gas side . . . . .	5/8 / 15.88
liquid side . . . . .	3/8 / 9.52
Max. refrigerant pipe length (ft/m) . . . . .	165 / 50
Max. refrigerant pipe height difference (ft/m) . . . . .	100 / 30
Connection method . . . . .	flared

**NOTES :**

- \*1. Rating conditions (cooling)-indoor : D.B. 80°F, W.B. 67°F  
 outdoor : D.B. 95°F, W.B. 75°F.  
 \*2. Rating conditions (heating)-indoor : D.B. 70°F, W.B. 60°F outdoor : D.B. 17°F, W.B. 15°F.

**Operating range**

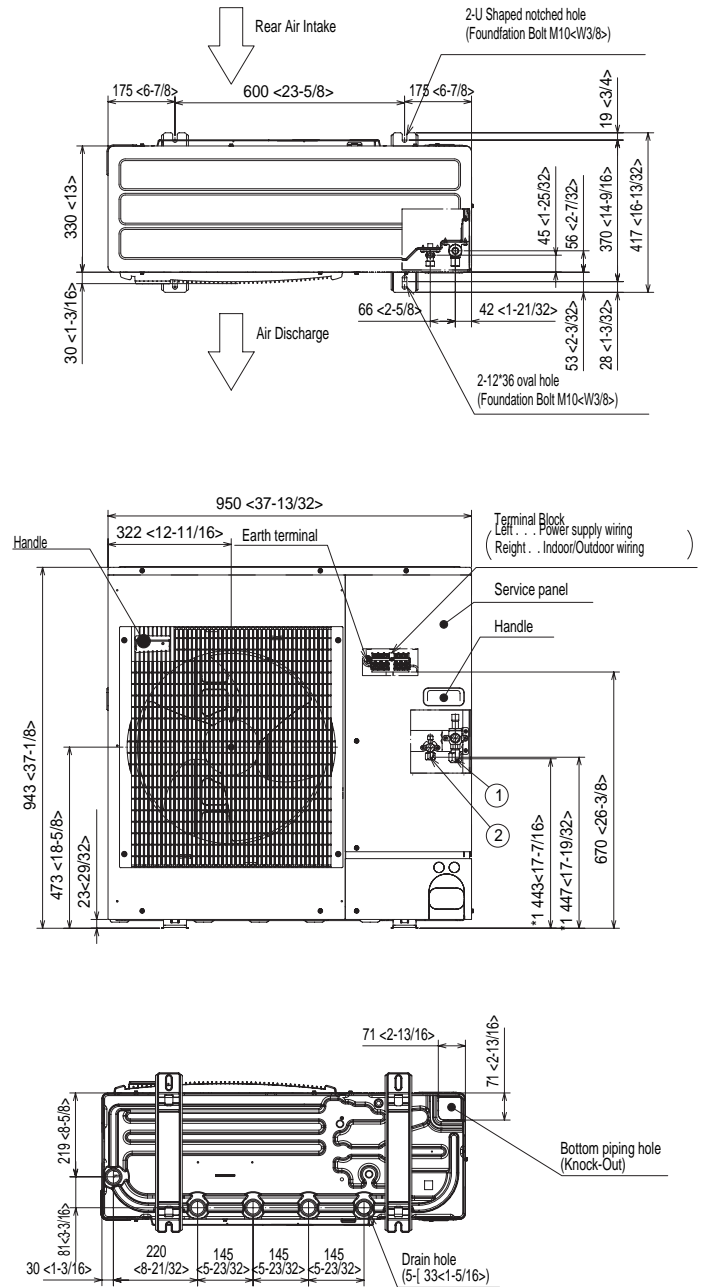
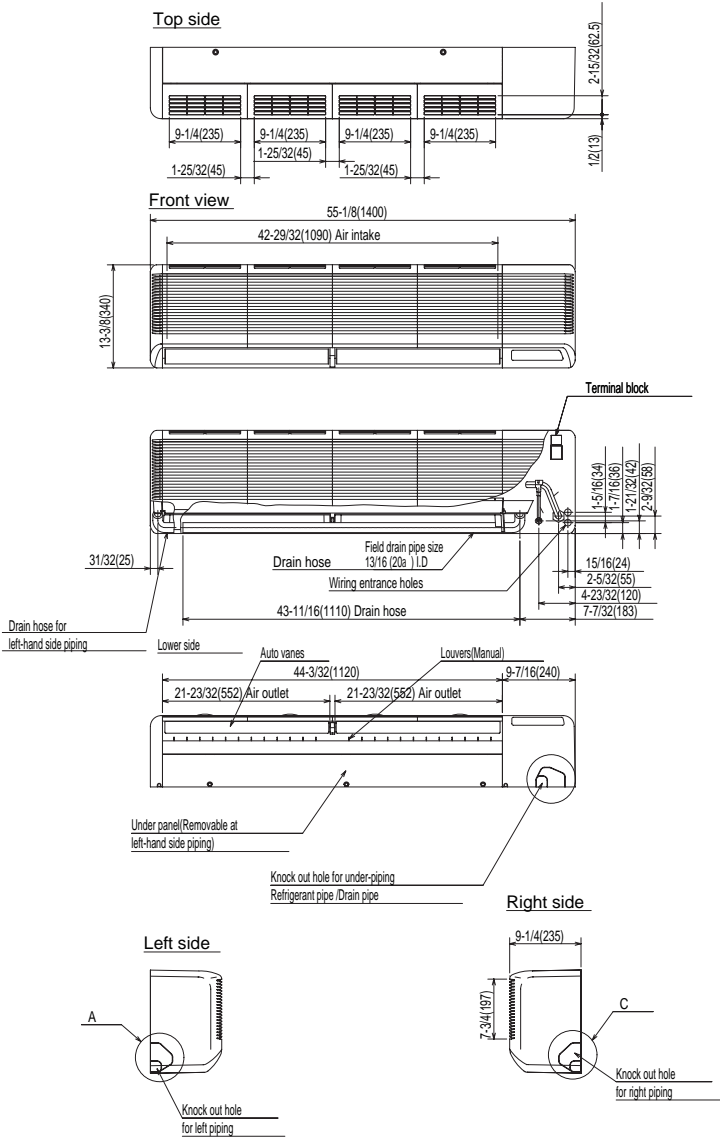
		Indoor intake air temp.	Outdoor intake air temp.
Cooling	Maximum	D.B. 95°F, W.B. 71°F	D.B. 115°F
	Minimum	D.B. 67°F, W.B. 57°F	D.B. 0°F *
Heating	Maximum	D.B. 80°F, W.B. 67°F	D.B. 70°F, W.B. 59°F
	Minimum	D.B. 70°F, W.B. 60°F	D.B. 12°F, W.B. 10°F

\* With wind baffle installed. If not installed, the minimum rated temperature is 23°FDB.



Notes:

# DIMENSIONS: PKA-A30FA & PUZ-A30NHA



HVAC Advanced Products Division  
Mitsubishi Electric & Electronics USA, Inc.

3400 Lawrenceville Suwanee Rd  
Suwanee, GA 30024  
Tele: 678-376-2900 • Fax: 800-889-9904  
Toll Free: 800-433-4822 (#3)  
www.mehvac.com  
Specifications are subject to change without notice.

**SUBMITTAL DATA: PKA-A30FAL & PUZ-A30NHA**
**30,000 Btu/h WALL-MOUNTED HEAT PUMP SYSTEM**

Job Name:	Location:	Date:
Purchaser:	Engineer:	
Submitted to:	For <input type="checkbox"/> Reference <input type="checkbox"/> Approval <input type="checkbox"/> Construction	
Unit Designation:	Schedule No.:	

### GENERAL FEATURES

- Limited warranty: one year on parts and defects and six years on compressor
- Compact side-discharge outdoor unit
- Zone control
- Wireless remote controller
- Automatic fan speed control
- Quiet operation – both, indoor and outdoor units
- Auto restart following a power outage
- Self check function
- Advanced microprocessor control
- Auto changeover for cooling and heat

#### Cooling

Rated capacity	30,000 Btu/h
Minimum capacity	12,000 Btu/h
Total input	4400 W
SEER	13.0
Power supply	208 / 230V, 1 Phase, 60 Hz
Breaker size	30 A

#### Heating

Rated capacity	34,000 Btu/h
Minimum capacity	12,000 Btu/h
Total input	3660 W
HSPF (IV/V) (Btu/h/W)	8.5 / 6.8

#### Voltage

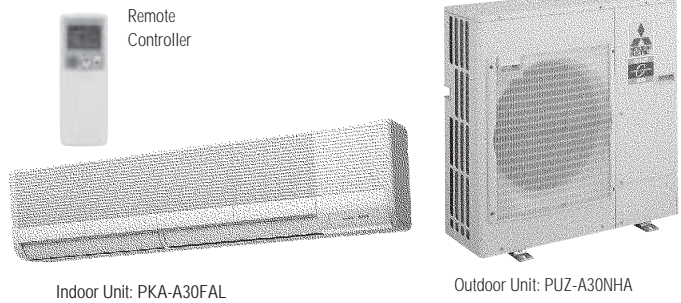
Indoor - outdoor S1-S2	AC 208/230V
Indoor - outdoor S2-S3	DC 24V
Indoor - remote controller	DC

#### Indoor unit

MCA	1 A
Fan motor	0.43 F.L.A.
Fan motor output	45 W
Airflow (Lo-Hi)	.530-705 Dry CFM 480-635 Wet CFM
Sound level (Lo-Hi)	39-45 dB(A)

	INCHES	MM
W	55-1/8	1400
D	9-1/4	235
H	13-3/8	340

Weight (lbs/kg)	53 / 24
Field drain pipe size I.D. (inches/mm)	3/4 / 19.05



#### Outdoor unit

Compressor	DC inverter/twin rotary
MCA	25
Fan motor	0.75 F.L.A.
Sound level	48 dB(A)

	INCHES	MM
W	37-3/8	950
D	13 + 1-3/16	330 + 30
H	37-1/8	943

Weight (lbs/Kg)	165 / 75
Refrigerant type	R410A
Refrigerant pipe size O.D. (inches/mm)	
gas side	5/8 / 15.88
liquid side	3/8 / 9.52
Max. refrigerant pipe length (ft/m)	165 / 50
Max. refrigerant pipe height difference (ft/m)	100 / 30
Connection method	flared

#### NOTES :

\*1. Rating conditions (cooling)-indoor : D.B. 80°F, W.B. 67°F  
 outdoor : D.B. 95°F, W.B. 75°F.

\*2. Rating conditions (heating)-indoor : D.B. 70°F, W.B. 60°F outdoor : D.B. 17°F, W.B. 15°F.

#### Operating range

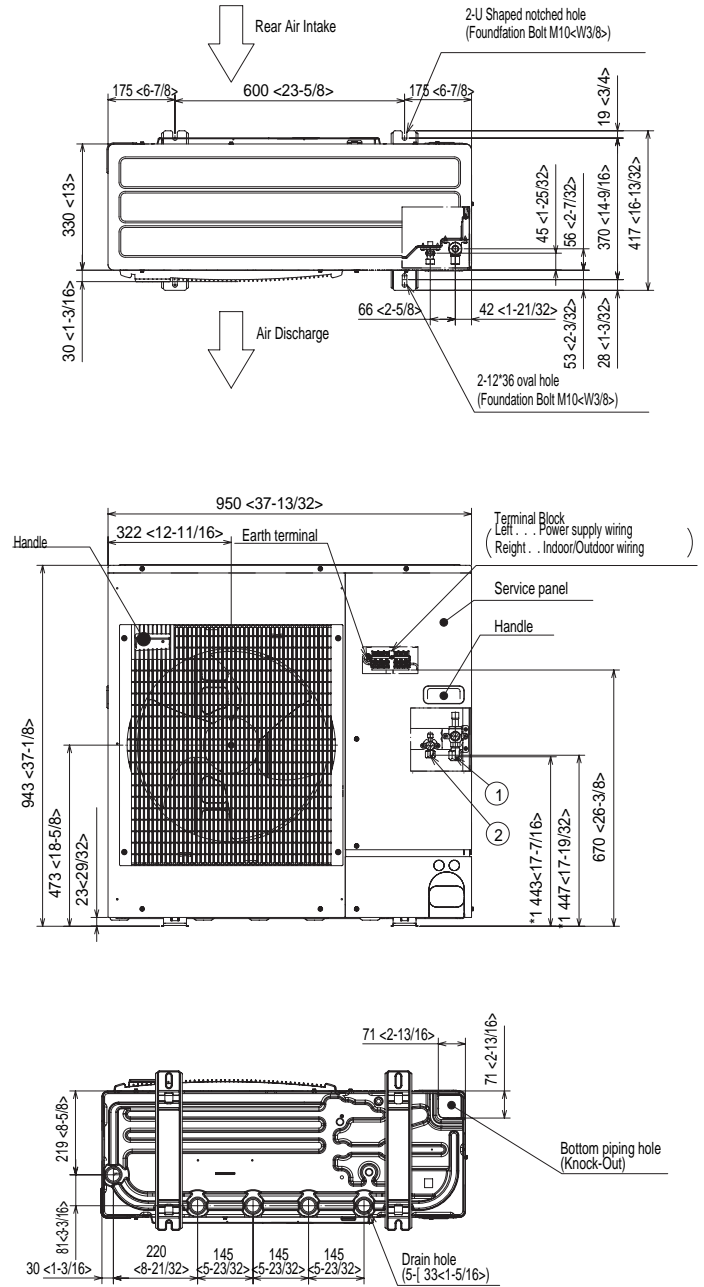
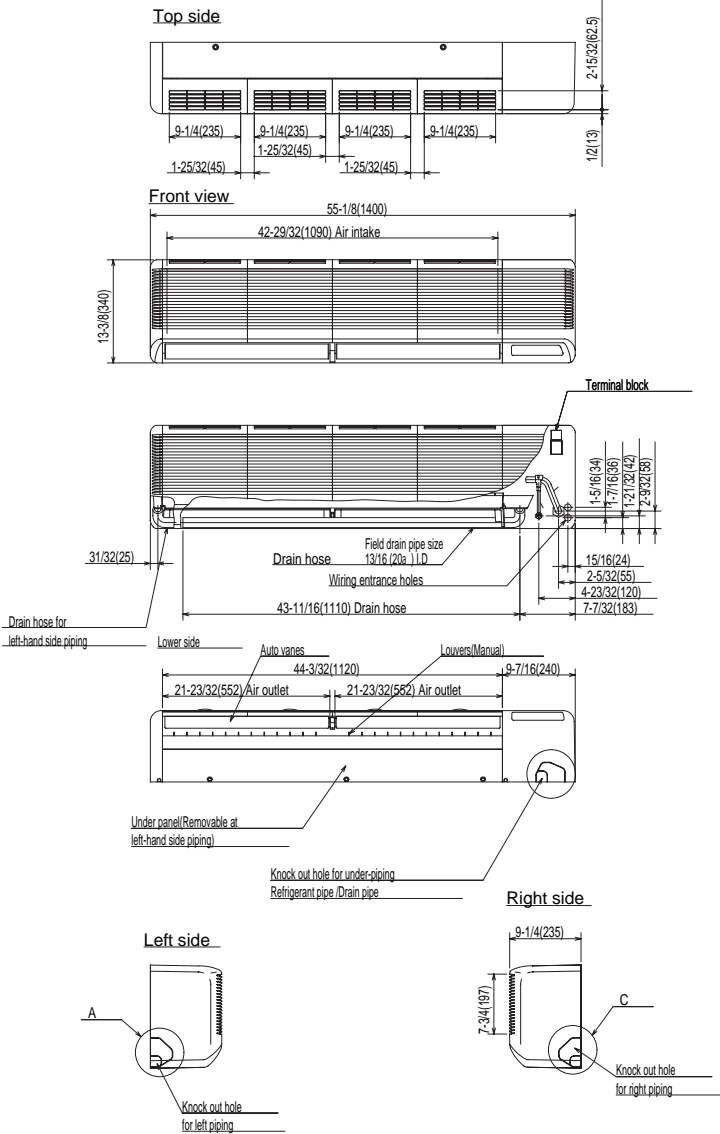
		Indoor intake air temp.	Outdoor intake air temp.
Cooling	Maximum	D.B. 95°F, W.B. 71°F	D.B. 115°F
	Minimum	D.B. 67°F, W.B. 57°F	D.B. 0°F *
Heating	Maximum	D.B. 80°F, W.B. 67°F	D.B. 70°F, W.B. 59°F
	Minimum	D.B. 70°F, W.B. 60°F	D.B. 12°F, W.B. 10°F

\* With wind baffle installed. If not installed, the minimum rated temperature is 23°FDB.



Notes:

# DIMENSIONS: PKA-A30FAL & PUZ-A30NHA



HVAC Advanced Products Division  
 Mitsubishi Electric & Electronics USA, Inc.

3400 Lawrenceville Suwanee Rd  
 Suwanee, GA 30024  
 Tele: 678-376-2900 • Fax: 800-889-9904  
 Toll Free: 800-433-4822 (#3)  
 www.mehvac.com  
 Specifications are subject to change without notice.