

SUBMITTAL DATA: PLA-A12AA & PUY-A12NHA

12,000 Btu/h CEILING CASSETTE AIR-CONDITIONING SYSTEM

Job Name:	Location:	Date:
Purchaser:	Engineer:	
Submitted to:	For <input type="checkbox"/> Reference <input type="checkbox"/> Approval <input type="checkbox"/> Construction	
Unit Designation:	Schedule No.:	

GENERAL FEATURES

- Limited Warranty – One year on parts and defects, six years on compressor
- Compact, side discharge outdoor unit
- Quiet operation – indoor and outdoor units
- Auto-restart following a power outage
- Self-check function – onboard diagnostics
- Advanced microprocessor control
- Built-in drain lift mechanism for condensate removal
- Zone control
- Hard-wired, wall-mounted, remote controller (PAR-21MAA)
- 2, 3, or 4 way air flow selection / 6" round or 4 X 14" rectangular branch duct connection
- 4" ventilation air inlet
- Washable filter

OPTIONAL FEATURES

- Multi-function casement
- High efficiency filter element
- Air outlet shutter plate(s)
- Wireless Remote Controller kit
- M-Net adapter
- Wind Baffle
- Air outlet guide

COOLING

Rated capacity 12,000 Btu/h
 Minimum capacity 6,000 Btu/h
 SEER 13.0 Btu/h/W
 Total input 1260 W
 Power supply 208 / 230V, 1 Phase, 60 Hz
 Breaker size 15 A

VOLTAGE

Indoor - Outdoor S1-S2 AC 208/230V
 Indoor - Outdoor S2-S3 DC 24V
 Indoor - Remote Controller DC

NOTES:

*1. Rating conditions (cooling)-indoor : D.B. 80°F, W.B. 67°F
 outdoor : D.B. 95°F, W.B. 75°F.

OPERATING RANGE

	Indoor intake air temp.		Outdoor intake air temp.
Cooling	Max	D.B. 95°F, W.B. 71°F	D.B. 115°F
	Min	D.B. 67°F, W.B. 57°F	D.B. 0°F *

* With wind baffle installed. If not installed, the minimum temperature will be 23°FDB.


INDOOR UNIT

MCA 1 A
 Fan motor 0.79 F.L.A.
 Fan motor output 70 W
 Airflow (Lo-M1-M2-Hi) 390-420-460-490 Dry CFM
 350-380-420-450 Wet CFM
 Sound level (Lo-M1-M2-Hi) 27-28-29-31 dB(A)

DIMENSIONS

		UNIT	PANEL
inches	W	33-1/16	37-3/8
	D	33-1/16	37-3/8
	H	10-3/16	1-3/16
mm	W	840	950
	D	840	950
	H	258	30

WEIGHT (unit/panel)

Pounds 49 / 11
 Kg 22 / 5
 Field drain pipe size I.D. (inches/mm) 1 / 25.4
 Wall-mounted remote controller PAR-21MAA
 (see data submittal sheet)

OUTDOOR UNIT

Compressor DC inverter/twin rotary
 MCA 13
 Fan motor 0.35 F.L.A.
 Sound level. 46 dB(A)

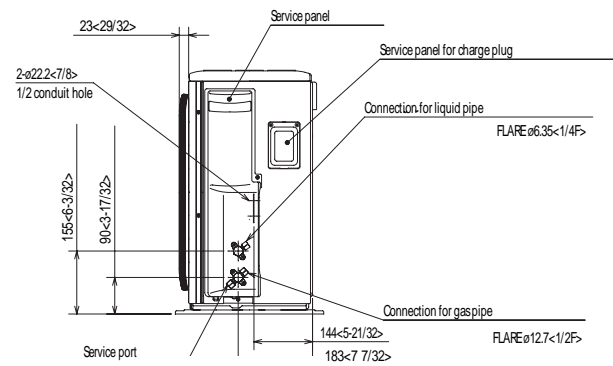
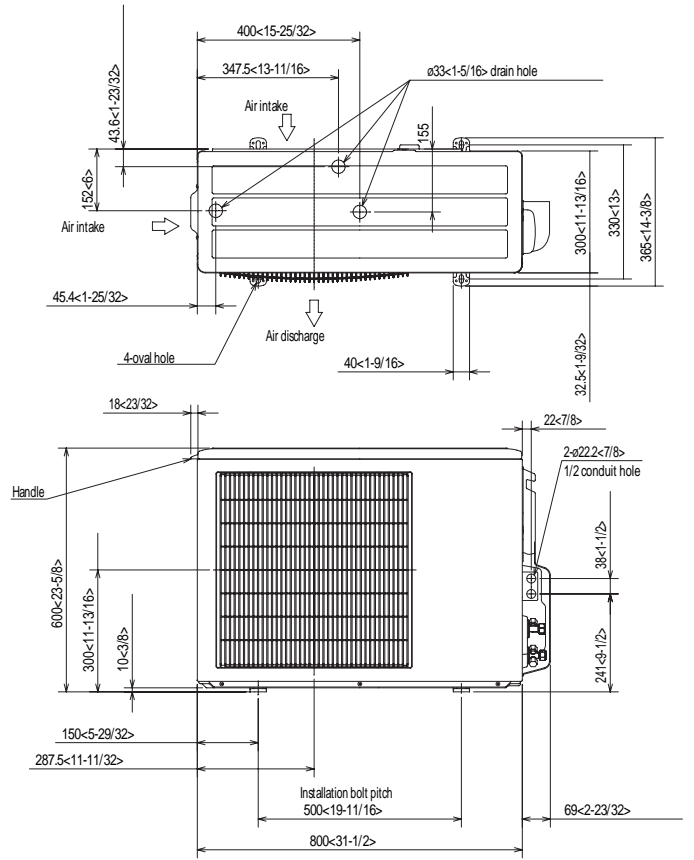
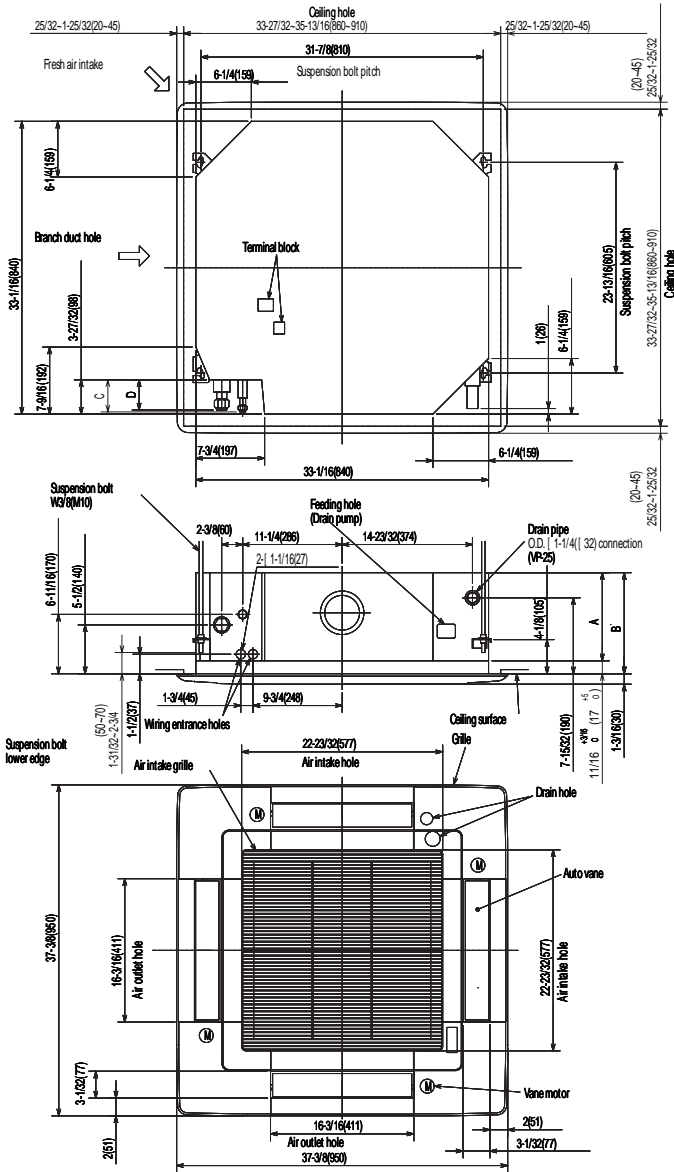
DIMENSIONS

	INCHES	MM
W	31-1/2	800
D	13 + 7/8	330 + 23
H	23-5/8	600

Weight (lbs/Kg) 90 / 41
 Refrigerant type R410A
 Refrigerant pipe size O.D. (inches/mm)
 gas side 1/2 / 12.7
 liquid side 1/4 / 6.35
 Max. refrigerant pipe length (ft/m) 100 / 30
 Max. refrigerant pipe height difference (ft/m) 100 / 30
 Connection method flared

Notes:


DIMENSIONS: PLA-A12AA & PUY-A12NHA



ARI Standard
210/240 UHP



HVAC Advanced Products Division
Mitsubishi Electric & Electronics USA, Inc.

3400 Lawrenceville Suwanee Rd
Suwanee, GA 30024
Tele: 678-376-2900 • Fax: 800-889-9904
Toll Free: 800-433-4822 (#3)

www.mehvac.com
Specifications are subject to change without notice.