

**SUBMITTAL DATA: PLA-A18AA & PUZ-A18NHA**
**18,000 BTU/H CEILING CASSETTE HEAT PUMP SYSTEM**

Job Name: _____	Location: _____	Date: _____
Purchaser: _____	Engineer: _____	
Submitted to: _____	For <input type="checkbox"/> Reference <input type="checkbox"/> Approval <input type="checkbox"/> Construction	
Unit Designation: _____	Schedule No.: _____	

**GENERAL FEATURES**

- Limited Warranty – One year on parts and defects, six years on compressor
- Compact, side discharge outdoor unit
- Quiet operation – indoor and outdoor units
- Auto-restart following a power outage
- Self-check function – onboard diagnostics
- Advanced microprocessor control
- Built-in drain lift mechanism for condensate removal
- Zone control
- Hard-wired, wall-mounted, remote controller (PAR-21MAA)
- 2, 3, or 4 way air flow selection / 6" round or 4 X 14" rectangular branch duct connection
- 4" ventilation air inlet
- Washable filter
- Auto changeover for cooling and heat

**OPTIONAL FEATURES**

- Multi-function casement
- High efficiency filter element
- Air outlet shutter plate(s)
- Wireless Remote Controller kit
- M-Net adapter
- Wind Baffle
- Air outlet guide

**COOLING**

Rated capacity . . . . . 18,000 Btu/h  
 Minimum capacity . . . . . 8,000 Btu/h  
 SEER . . . . . 13.2 Btu/h/W  
 Total input. . . . . 1870 W  
 Power supply . . . . . 208 / 230V, 1 Phase, 60 Hz  
 Breaker size . . . . . 15 A

**HEATING**

Rated capacity . . . . . 19,000 Btu/h  
 Minimum capacity . . . . . 8,000 Btu/h  
 Total input. . . . . 1620 W  
 HSPF (I/V) (Btu/h/W). . . . . 10 / 7.8

**VOLTAGE**

Indoor - outdoor S1-S2 . . . . . AC 208/230V  
 Indoor - outdoor S2-S3 . . . . . DC 24V  
 Indoor - remote controller . . . . . DC

**OPERATING RANGE**

	Indoor intake air temp.		Outdoor intake air temp.
Cooling	Max	D.B. 95°F, W.B. 71°F	D.B. 115°F
	Min	D.B. 67°F, W.B. 57°F	D.B. 0°F *
Heating	Max	D.B. 80°F, W.B. 67°F	D.B. 70°F, D.B. 59°F
	Min	D.B. 70°F, W.B. 60°F	D.B. 12°F, W.B. 10°F

\* With wind baffle installed. If not installed, the minimum temperature will be 23°FDB.

**Notes:**

**INDOOR UNIT**

MCA . . . . . 1 A  
 Fan motor . . . . . 0.79 F.L.A.  
 Fan motor output . . . . . 70 W  
 Airflow (Lo-M1-M2-Hi) . . . . . 530-570-640-710 Dry CFM  
 490-530-600-670 Wet CFM  
 Sound (level) (Lo-M1-M2-Hi) . . . . . 28-30-32-34 dB(A)

**DIMENSIONS**

	UNIT	PANEL
inches	W	33-1/16
	D	33-1/16
	H	10-3/16
mm	W	840
	D	840
	H	258

**WEIGHT (unit/panel)**

Pounds . . . . . 53 / 11  
 Kg . . . . . 24 / 5  
 Field drain pipe Size I.D. (inches/mm) . . . . . 1 / 25.4  
 Wall-mounted remote controller . . . . . PAR-21MAA  
 (see data submittal sheet)

**OUTDOOR UNIT**

Compressor . . . . . DC inverter/twin rotary  
 MCA . . . . . 13  
 Fan motor . . . . . 0.35 F.L.A.  
 Sound level. . . . . 46 dB(A)

**DIMENSIONS**

	INCHES	MM
W	31-1/2	800
D	13 + 7/8	330 + 23
H	23-5/8	600

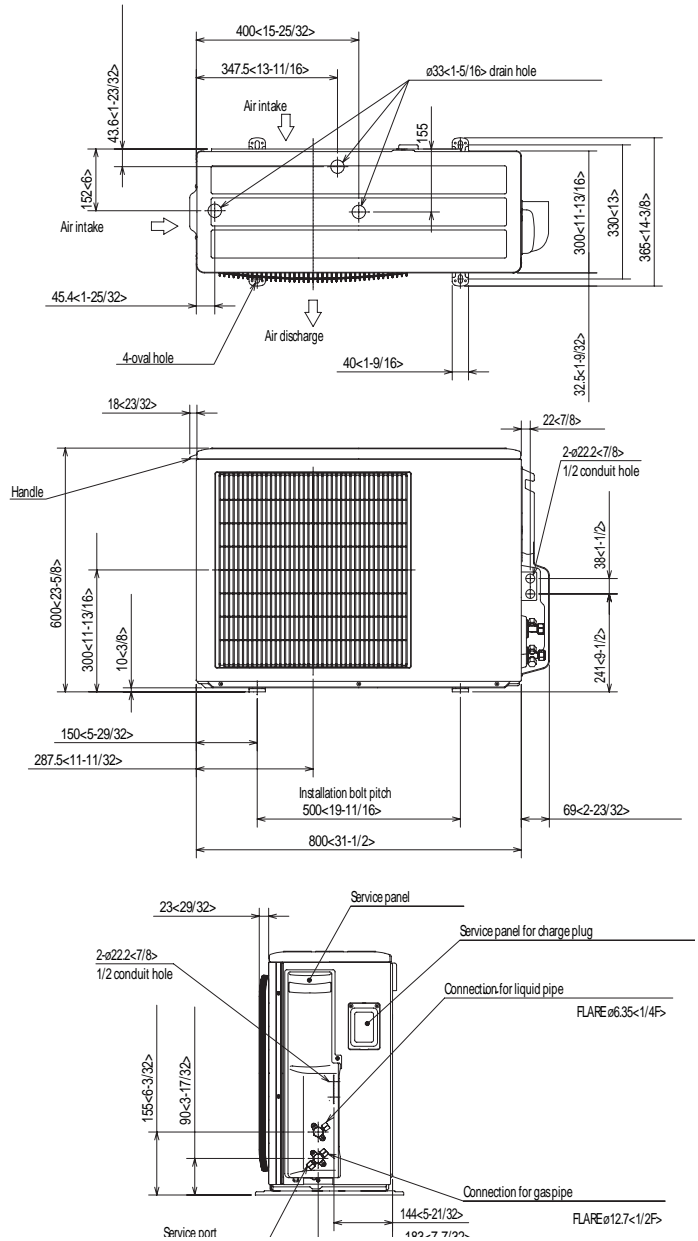
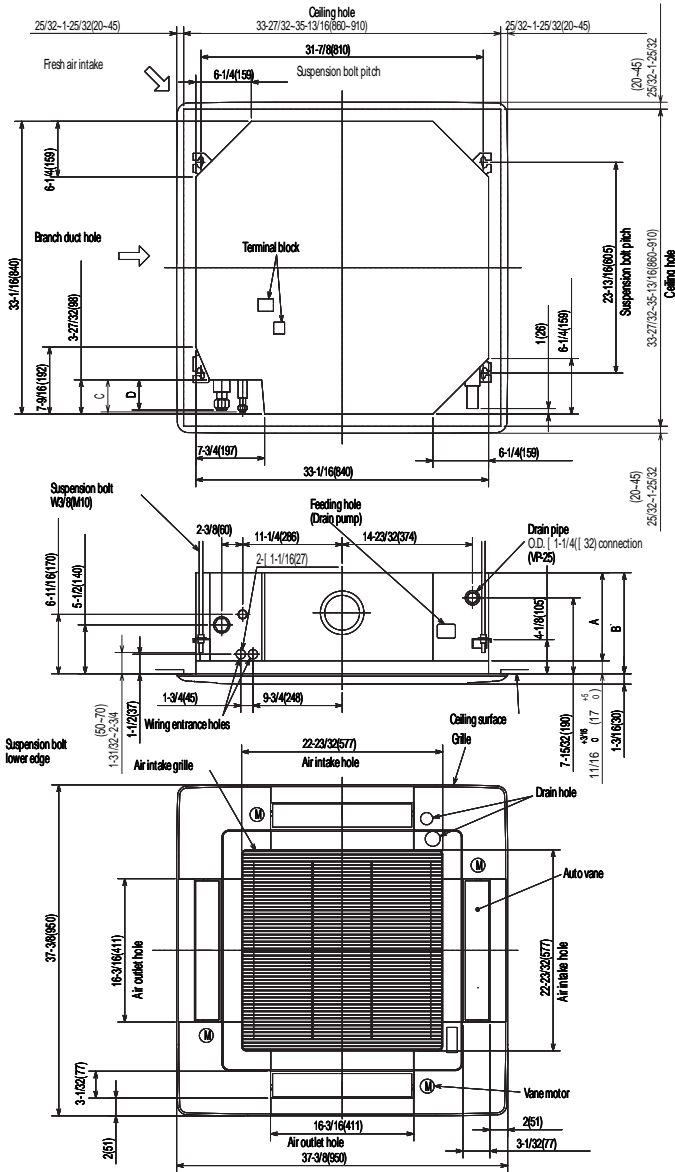
Weight (lbs/Kg) . . . . . 99 / 45  
 Refrigerant type . . . . . R410A  
 Refrigerant pipe size O.D. (inches/mm)  
 gas side . . . . . 1/2 / 12.7  
 liquid side . . . . . 1/4 / 6.35  
 Max. refrigerant pipe length (ft/m) . . . . . 100 / 30  
 Max. refrigerant pipe height difference (ft/m) . . . . . 100 / 30  
 Connection method . . . . . flared

**NOTES :**

- \*1. Rating conditions (cooling)-indoor : D.B. 80°F, W.B. 67°F outdoor : D.B. 95°F, W.B. 75°F.
- \*2. Rating conditions (heating)-indoor : D.B. 70°F, W.B. 60°F outdoor : D.B. 17°F, W.B. 15°F.



# DIMENSIONS: PLA-A18AA & PUZ-A18NHA



ARI Standard  
210/240 UHP



HVAC Advanced Products Division  
Mitsubishi Electric & Electronics USA, Inc.

3400 Lawrenceville Suwanee Rd  
Suwanee, GA 30024  
Tele: 678-376-2900 • Fax: 800-889-9904  
Toll Free: 800-433-4822 (#3)  
www.mehvac.com

Specifications are subject to  
change without notice.